



CURRICULUM DIRECTORY 2020-21



*Artwork by Andrea Williams
Scholastic Gold Key Winner*

Mrs. Tiffany Molina, Principal
Ms. Michaela Jackson, Assistant Principal
Mr. Chad Wachholtz, Assistant Principal
Mrs. Sheila McCauley, Dean of Students

Counselors: Mrs. Jennifer Buelt
Mrs. Anna Sparwasser
Mrs. Ellen Thompson
Instructional Facilitator: Mrs. Jaclyn Bales
Gifted/Talented Facilitator: Mr. Dan Guinan

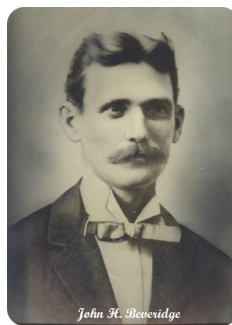


Beveridge Middle School was named in honor of John Harrie Beveridge, who was the superintendent of the Omaha Public Schools from 1917 until his death in 1932. These were important years for the Omaha Public Schools. Much of our school district's strong academic tradition can be attributed to Superintendent Beveridge.

Mr. Beveridge was a hardworking man who was never afraid to stand up for what he thought was right. He was a man of kindness and concern for others. John H. Beveridge Junior-Senior High School opened its doors in the fall of 1963 with 946 students in grades 7 through 12.

As the first junior-senior high school in the Omaha Public Schools, Beveridge was built to accommodate students in a rapidly growing West Omaha community. Beveridge was built on a "pay-as-we-go" plan totaling \$2.1 million with no bond money used in the construction.

Beveridge is located on a 17-acre site midway between Pacific and Center Streets and continues to be utilized today in much the same way as originally built 50 years ago. Beveridge Middle School was renamed as Beveridge Magnet Middle School of the Arts and Global Studies beginning in the school year 2001-2002. This magnet status has allowed us to offer educational opportunities that are unique to Beveridge. We are proud of our program and we are excited about the possibilities for our students.



Omaha Public Schools does not discriminate on the basis of race, color, national origin, religion, sex (including pregnancy), marital status, sexual orientation, disability, age, genetic information, gender identity, gender expression, citizenship status, veteran status, political affiliation or economic status in its programs, activities and employment and provides equal access to the Boy Scouts and other designated youth groups. The following individual has been designated to accept allegations regarding non-discrimination policies: Superintendent of Schools, 3215 Cuming Street, Omaha, NE 68131 (402-557-2001). The following persons have been designated to handle inquiries regarding the non-discrimination policies: Director for the Office of Equity and Diversity, 3215 Cuming St, Omaha, NE 68131 (531-299-9822). The following persons have been designated to handle inquiries regarding the non-discrimination policies: Director for the Equity and Diversity, 3215 Cuming St., Omaha, NE 68131 (531-299-0307).

Beveridge Magnet Middle School of Global Studies and the Arts

All students who enroll at Beveridge Magnet Middle School will have the opportunity to experience Global Studies and the Visual and Performing Arts. Sixth grade students will explore each area throughout the academic year. Seventh and eighth grade students will select a "major". This major allows students the opportunity to specialize in one aspect of the magnet theme every day for an entire year. Listed below are the major classes and a brief description of the course content.



Art/Dual Language Art

This class is designed for the student who is very interested in art technique and developing personal artistic style. Dual Language Art is open to students in the Dual Language program and is taught in Spanish with an emphasis on Hispanic culture.



Band

Band is offered to students who have one or more years of band experience at the elementary level and desire to continue to enhance their skills through scales, technique studies, solos/ensembles, and selected concert band music.



Chorus/Dual Language Voices of the World

Chorus is offered to students who demonstrate a high level of achievement and the desire to work hard to excel in vocal performance. Dual Language Voices of the World is open to students enrolled in the Dual Language program. It is taught in Spanish, and explores singing, dancing, and music from Latin America, South America, and Spain.



Drama

Advanced concepts of acting are taught in this class, as well as playwriting, stage combat, directing, and international drama.



International Studies

Global Studies is open to students interested in examining countries, people, and issues that are shaping our contemporary world.



Orchestra

This class is offered to students who have successfully completed two years of orchestra study at the elementary level. Instruments include violin, viola, cello, and string bass.

6th grade

All sixth-grade students at Beveridge Magnet Middle School of Global Studies and the Arts will enroll in the following courses: Language Arts, Social Studies, Mathematics, and Science. In addition, students will have opportunities to explore global studies and the visual and performing arts. A detailed description of each class follows.

ENGLISH LANGUAGE ARTS

This course supports student mastery of sixth grade writing standards and focuses on developing and applying students' knowledge in language and composition. Students will develop skills in writing, speaking, listening, and multiple literacies as appropriate to this grade level.

MATHEMATICS

Mathematics 6

This course covers the 6th grade mathematics content standards. Students will work with integers, fractions, decimals, percentages, and the metric system of measurement. They will apply properties of geometry, use data analysis, and solve problems involving multiple step equations.

Advanced Mathematics 6

This course will extend the learning opportunities for students who are prepared for the rigorous and challenging curriculum extension through the development of the number system carried on in the earlier elementary grades. Content includes work on the fundamental operations and using these operations with the various subsets of the real number system such as whole numbers, fractions, and decimals. This course also addresses unit conversions within a system of measurement, geometry, data analysis, two-step equations and problem solving. All math classes at the sixth-grade level will integrate electronic media and communication skills. Student placement is based on district criteria standards.

SCIENCE

The sixth-grade standards and indicators help students gather, analyze, and communicate evidence as they formulate answers to questions tailored to student interest and current topics that may include but are not limited to: How can energy be transferred from one object or system to another? How do the structures of organisms contribute to life's functions? How do organisms grow, develop, and reproduce? What factors interact and influence weather and climate? How does water move through Earth's systems?

SOCIAL STUDIES

This course examines the ancient world by studying Western Europe, Egypt, Sub-Saharan Africa, and Latin America. Special attention is given to geography, history, economics, culture, and the government in these regions.

READING

Reading Skills B

This class offers a unique approach to teaching reading that enables students to improve their reading skills. It is based on research into how the brain learns a process and what the brain does when it reads well. Reading strategies unleashes the power of the brain to learn!

Reading Skills A

This is a groundbreaking reading system for striving middle school students. This class will focus on the seven strategies that are proven to have the greatest effect on students' reading skills - one strategy at a time!

MUSIC

***All music classes meet every other day (opposite PE) for the entire year.**

Beginning Band

This course is offered to students who have demonstrated an aptitude for and interest in instrumental music. Beginning instrumental techniques and appropriate musical understandings are introduced through "method" studies and selected band arrangements. Students are encouraged to secure their own instruments so that home practice is possible. Required performances will be held periodically throughout the school year.

Beginning Strings

This course is offered to middle school students who have demonstrated an interest in learning to play a string instrument. Appropriate method strategies are selected to introduce basic string techniques and musical understandings. Instruments included are violins, viola, cello, and string bass. Students studying violin are encouraged to secure their own instruments so that home practice is possible. Required performances will be held periodically throughout the school year.

Chorus

In this course, sixth grade students will continue to develop their skills for reading and singing two and three-part octavo music. The emphasis is on vocal performance. Required performances will be held periodically throughout they school year.

PHYSICAL EDUCATION

***Meets every other day for the entire year.**

The goals of the middle level Physical Education program are to promote and maintain the individual's physical fitness, to help develop muscle skills, to acquire desirable habits and attitudes about health and wellness, and to develop life-long interests in sports and fitness activities. Emphasis is placed on the cultural development of sports and games played in this country. 6th grade Human Growth and Development (HGD) lessons are taught by the school nurse during PE at various times during the year. Parents can opt their child out of these classes if desired. Additional information regarding HGD will be distributed at the beginning of the school year. Physical Education alternates with a music opportunity.

DRAMA (one quarter)

Students will have the opportunity to learn all of the major components of drama including acting, playwriting, directing, and technical theater.

INTERNATIONAL STUDIES (one quarter)

Students will explore a number of cultures and their economic practices. Students will be exposed to the concept of global interdependence in the business world and how this affects their lives and future careers.

ART (one quarter)

This course examines the chronology of world art from the prehistoric period to the renaissance. This course places an emphasis on creating art that explores the needs and ideas of the artist of a time period.

PIANO (one quarter)

All sixth-grade students enroll in an introduction to musical literacy through the medium of piano. Students will learn how to read musical notation in both treble and bass clef, proper keying techniques, elements of music, chord progression, and much more.

7th Grade

All seventh-grade students at Beveridge Magnet Middle School of Global Studies and the Arts enroll in the following courses: Language Arts, Social Studies, Mathematics, and Science. In addition, students will have a Magnet Major class each day.

ENGLISH LANGUAGE ARTS

Language Arts 7

Language Arts 7 emphasizes reading, writing, speaking, and listening skills through the exploration of literature, writing, projects, and reading strategies. Discovery is the focus of seventh grade Language Arts with an emphasis on identity, choices, perspectives, and convictions.

Honors Language Arts 7

Honors Language Arts 7 emphasizes reading, writing, speaking, and listening skills through the exploration of literature, writing, projects, and reading strategies. Discovery is the focus of seventh grade Language Arts with an emphasis on identity, choices, perspectives and convictions. This course will have a greater emphasis placed on the in-depth study of selected topics and works, additional composition alternatives, and critical and creative thinking development opportunities. For placement in Honors Language Arts 7, a student must meet district criteria standards.

SOCIAL STUDIES

Through the lens of discovery, students will investigate the contemporary world and reflect on their place in society. Seventh grade Social Studies students examine the cultures of Africa, Asia, the Middle East, and Post-Soviet Eurasia. Special attention is given to the geography, history, economics, culture, and the elements of citizenship within the countries studied. Students use textbooks, technology, novels, current events, and interdisciplinary activities to expand their understanding of the Eastern Hemisphere and the world.

MATHEMATICS

Mathematics 7

The development of the number system is reviewed and extended at the seventh-grade level. Students will work on fundamental mathematical operations and the use of operations with various subsets of the real numbering system. Applications from areas such as statistics, probability, geometry, measurement (including metric), percent, and pre-algebra are included.

Honors Pre-Algebra

Pre-Algebra is designed for students who demonstrate high achievement and interest in math as indicated by previous grades, achievement scores, teacher recommendation, and placement testing. This course provides an overview of various math topics with an emphasis on algebra and geometry.

Honors Algebra 1-2

Algebra 1-2 is designed for students who demonstrate very high achievement and interest in math as indicated by previous grades in mathematics, achievement, aptitude test scores, and placement testing. A rapid introduction to algebra is presented with extensive discussion and comparison of problems including: sets of numbers, number lines, absolute value, order of operations, equations, powers and roots, polynomials, factoring, graphs, and quadratic equations.

SCIENCE

Science 7

The seventh-grade standards and indicators help students gather, analyze, and communicate evidence as they formulate answers to questions tailored to student interest and current topics that may include but are not limited to: How does thermal energy affect particles? Why do different pure substances have different physical and chemical properties and how do those properties determine how substances are used? What happens when new materials are formed? How do organisms obtain and use energy? How does matter and energy move through an ecosystem? How do organisms interact with other organisms in the physical environment to obtain matter and energy? How do people figure out that earth and life on Earth have changed over time? How do the materials in and on Earth's crust change over time? How do human activities affect Earth's systems?

Honors Science 7

Honors Science 7 engages students in the three dimensions (science practices, disciplinary core ideas, and crosscutting concepts) of learning as identified by the Nebraska College and Career Ready Standards for Science. The topics include structure and properties of matter, chemical reactions, interdependent relationships in ecosystems, matter and energy in organisms and ecosystems, Earth's systems, history of Earth, heredity, and natural selection and adaptations. This course provides a foundation for other science courses. Students enrolled in honor courses have additional experiences that require a more rigorous program of study. Placement is based on district criteria standards.

READING

Reading Skills B

This class offers a unique approach to teaching reading that enables students to improve their reading skills. It is based on research into how the brain learns a process and what the brain does when it reads well. Reading strategies unleashes the power of the brain to learn!

Reading Skills A

This is a groundbreaking reading system for striving middle school students. This class will focus on the seven strategies that are proven to have the greatest effect on students' reading skills - one strategy at a time!

WORLD LANGUAGES

Students who read at or above grade level may select to study one of the four international languages offered at Beveridge Magnet Middle School of Global Studies and the Arts: **Chinese, French, German, or Spanish**. The formal study of an international language focuses on the skills of listening, speaking, reading, and writing. Classroom conversations and presentations allow students the opportunity to speak the language. Attention is also given to developing awareness and appreciation of the cultures of the languages being studied. One year of a World Language at Beveridge is equivalent to one semester of a high school World Language. Students who successfully complete two years of a World Language at Beveridge, will enter the high school World Language class at an advanced level.

PHYSICAL EDUCATION

***Meets every other day for the entire year.**

The goals of the middle level Physical Educational program are to promote and maintain the individual's physical fitness, to help develop muscle skills, to acquire desirable habits and attitudes about health and wellness, and to develop life-long interests in sports and fitness activities. Emphasis is placed on the cultural development of sports and games played in this country. Physical Education alternates with Career Education and Industrial Technology.

FAMILY AND CONSUMER SCIENCE

***Meets opposite PE class for one semester.**

Innovative curriculum that combines hands-on learning opportunities with technology is used in this class. Students investigate four units during the quarter. Examples of units selected by students are: clothing and textiles, nutrition and ethnic foods, child development, money management, family issues, interior design, and career exploration.

INDUSTRIAL TECHNOLOGY

***Meets opposite PE class for one semester.**

Industrial Technology meets opposite PE for one semester. Innovative curriculum that combines hands-on learning opportunities with technology is used in the class. Students investigate activity-based learning units with an emphasis on problem solving skills and teamwork. Examples of units selected by students are: careers, measurement, flight, research and design, drafting, city planning, and simple machines.

8th Grade

All eighth-grade students at Beveridge Magnet Middle School of Global Studies and the Arts enroll in the following courses: Language Arts, Social Studies, Mathematics, and Science. In addition, students will have a Magnet Major class each day.

LANGUAGE ARTS

Language Arts 8 focuses on written communication skills through the study of grammar, language mechanics, and the six-traits of writing. Through the lens of responsibility, essential reading skills are taught using novels and other types of literature.

Honors Language Arts 8 focuses on written communication skills through the study of grammar, language mechanics, and the six-traits of writing. Through the lens of responsibility, essential reading skills are taught using novels and other types of literature. This course will have an even greater emphasis placed on the in-depth study of selected topics and works, additional composition alternatives, and critical and creative thinking development opportunities. For placement in Honors Language Arts 8, a student must meet district criteria standards.

SOCIAL STUDIES

At the eighth-grade level, students will be studying American History with a global focus. Students investigate the following units: government expansion, civil war, the rise of industries and cities, and World War I. Special attention is given to the geography, history, economics, culture, and the elements of citizenship. As eighth graders, students will take a broader look and acquire a perspective of the world. To accomplish this, students will participate in lab activities, research projects, technology opportunities, presentations, writing, literature, and drama that will introduce world issues and offer students the skills to become active problem solvers and concerned global citizens in our ever-changing world.

MATHEMATICS

Pre-Algebra

Pre-Algebra is designed for students who demonstrate high achievement and interest in math as indicated by previous grades, achievement scores, teacher recommendation, and placement testing. This course provides an overview of various math topics with an emphasis on algebra and geometry.

Honors Algebra 1-2

Algebra 1-2 is designed for students who demonstrate very high achievement and interest in math as indicated by previous grades in mathematics, achievement, aptitude test scores and placement testing. A rapid introduction to algebra is presented with extensive discussion and comparison of problems including: sets of numbers, number lines, absolute value, order of operations, equations, powers and roots, polynomials, factoring, graphs, and quadratic equations.

Honors Geometry 1-2

Geometry is designed for students who demonstrate very high achievement and interest in math as indicated by successful completion of Algebra 1-2, achievement and aptitude test scores, and teacher recommendation. A rapid introduction to geometry is presented with extensive discussion and comparison of problems including: points, angles, and planes; parallel and perpendicular lines; congruence; similar polygons; circles; areas and volumes; and coordinate geometry. Algebra skills are maintained throughout the course.

SCIENCE

The eighth-grade standards and indicators help students gather, analyze, and communicate evidence as they formulate answers to questions tailored to student interest and current topics that may include but are not limited to: How can one describe physical interactions between objects and within systems of objects? How does the energy of an object change relate to its mass, speed, and position in a system? What factors cause genes to change and how does that affect the structure and function of organisms? How does genetic variation among

organisms in a species affect survival and reproduction? How does the environment influence genetic traits in populations over multiple generations? What is Earth's place in the Universe? What makes up our solar system and how can the motion of Earth explain seasons and eclipses?

Honors Physical Science

Physical Science is an inquiry-based course designed to expose students to selected concepts in chemistry, physics, earth, and space science. Topics include matter, energy, forces and motion, Earth in space, and Earth structures and processes. This course provides a foundation for other science courses. For placement in Honors Physical Science, a student must meet district criteria standards.

READING

Reading Skills B

This class offers a unique approach to teaching reading that enables students to improve their reading skills. It is based on research into how the brain learns a process and what the brain does when it reads well. Reading strategies unleashes the power of the brain to learn!

Reading Skills A

This is a groundbreaking reading system for striving school middle students. This class will focus on the seven strategies that are proven to have the greatest effect on students' reading skills - one strategy at a time!

WORLD LANGUAGES

Students who read at or above grade level may select to study one of the four international languages offered at Beveridge Magnet School of Global Studies and the Arts: **Chinese, German, French, or Spanish**. The formal study of an international language focuses on the skills of listening, speaking, reading, and writing. Classroom conversations and presentations allow students the opportunity to speak the language. Attention is also given to developing awareness and appreciation of the cultures of the languages being studied. One year of a World Language at Beveridge is equivalent to one semester of a high school World Language. Students who successfully complete two years of a World Language at Beveridge, will enter the high school World Language class at an advanced level.

PHYSICAL EDUCATION

***Meets every other day for the entire year.**

The goals of the middle level Physical Educational program are to promote and maintain the individual's physical fitness, to help develop muscle skills, to acquire desirable habits and attitudes about health and wellness, and to develop life-long interests in sports and fitness activities. Emphasis is placed on the cultural development of sports and games played in this country.

HUMAN GROWTH AND DEVELOPMENT

***Meets opposite of PE for one semester.**

It is designed to help students acquire knowledge and responsible decision-making skills towards the physical, social, and emotional aspects of personal maturation, human sexuality, and family life. The course focuses on the following five concepts: 1) the family is a constantly changing unit, 2) puberty is a time for many changes, 3) peer relations and their influences, 4) human reproduction involves many responsibilities for men and women 5) sexual health care is the responsibility of each individual. Parents who request that their child not participate in the human growth and development course may discuss options with their child's counselor.

8TH GRADE COMPUTER APPLICATIONS

***Meets opposite of PE class for one semester.**

Students review proper keying techniques, letters, numbers, and symbols on the entire keyboard. Students will also be introduced to the basics of Microsoft Word and other applications.

MAGNET MAJORS
For 7th and 8th grade students only.
All magnet major classes meet daily

Art

This major is designed for the student who is very interested in learning more about art and art techniques. Advanced projects, both two-dimensional and three-dimensional, are designed to give students the opportunity to explore a variety of art media and techniques with a focus on personal identity. With art as a catalyst, attention is also given to enhancing writing skills and expanding knowledge of various countries and cultures, as well as responding to, interpreting, and evaluating current and historical art works. Students will have opportunities to exhibit their artwork at school, throughout the community, and on the Internet.

Intermediate Band/Advanced Band

Band is offered to students with advanced abilities developed through one or two years of elementary school band participation. Placement is based on ability level. Music introduced includes: scales, technique studies, solos/ensembles, and selected concert band music, including music from a variety of cultures from around the world. Membership is achieved by audition and/or approval from the Beveridge band instructor and may be limited by instrumentation needs. The class offers opportunities to perform at school concerts, band festivals, honor bands, the All-City Music Festival, and the Adventureland Festival of Bands in Des Moines, Iowa. Opportunities will also be provided for observation of and participation in high school band activities.

Intermediate/Advanced Chorus

Chorus is offered to both seventh and eighth grade students who demonstrate a high level of achievement and the desire to work hard to excel in vocal performance. Placement is based on ability judged by Beveridge choral directors and/or elementary teacher recommendation. Students will build on the choral fundamentals of reading music and proper vocal technique to develop the advanced skills necessary to meet the demands of the challenging music they will be exploring. Students will have the opportunity to perform at several different concerts, including All-City Music Festival, semester concerts, festivals, and additional special school events.

Dual Language Art

Dual Language Art is a major designed for young Spanish-speaking artists. Students will be exposed to many mediums, including drawing, painting, printmaking, clay and sculpture with an emphasis on Hispanic culture.

Dual Language Showcase

Dual Language Chorus is offered as a magnet major under the umbrella of the Dual Language program. Aligning the goals of the Dual Language program, as well as Beveridge's tradition of dance performance, instruction and rehearsals are in both Spanish and English. Students perform a wide variety of dances with an emphasis on Spanish music from countries around the world. Several performances are required.

Drama

Drama is offered to students who are very interested in the Theater. Early experiences in this course include: improvisation, ice breakers, and theater games to build student poise and self-confidence. Basic concepts of acting are taught as well as playwriting, stage combat, character acting, and international drama. The class will offer opportunities to perform in school productions, work backstage, and specialize in various technical positions.

Global Studies

Global Studies is open to seventh and eighth grade students who are interested in the cultures, people, and events that have shaped our world. Students will use technology, print media, literature, project-based learning, experiential-based learning, and service learning. Content will be based on global themes such as the movement of populations, human rights, the arts, entertainment, and more.

Intermediate/Advanced Orchestra

Orchestra is offered to students who have successfully completed two years of study at the elementary level or received teacher recommendation. Placement is based on ability level. The instrumentation includes violin, viola, cello, and the string bass. Students with previous instrumental experiences may begin change-over on the low string instruments. Performance opportunities include school concerts, concerts at elementary schools, All-City Music Festival, and competition at local and regional contests including the Adventureland Music Festival in Des Moines, Iowa.

EXPLORATORY CLASSES

For 7th and 8th grade students only.

***Students will have four different exploratory classes throughout the year. Each class will meet for one quarter. Students do NOT select these classes; they are assigned based on the schedule. ***

Acoustic Music

This class presents the opportunity for students to become proficient at the acoustic guitar. Each student will also have the opportunity to play basic guitar. Students will practice and study several techniques, major, minor, and seventh chords, basic music theory, and formulas used in today's popular songwriting. Students will learn the chord progressions to songs from genres such as rock, pop, blues, jazz, country, and international music.

Art Survey

Students will explore visual and cultural arts. This course involves art production, drawing, and painting, mixed media, collage, printmaking, ceramics, and/or sculpture.

Exploratory Dance

This course is designed to introduce students to various types of dance. Limited performance opportunities may be provided to showcase students' developing skills depending on progress demonstrated by class members.

Global Foods

Students will explore a number of cultures and their native culinary practices. Basic kitchen safety, tool identification and use, preparation terminology, and small appliance use will be topics included in this curriculum. The students will work in cooperative lab groups to prepare and sample recipes representative of individual countries.

Intro to Tech & Living

This course is designed to teach students technical skills such as measuring, tool use, basic home repair, and will culminate with the completion of a wood project. Machine safety, tool usage, and proper materials will be emphasized in this hands-on course.

Photography

Students will learn to use cameras to create traditional black and white and color photographs. Photography focuses on camera use, composition, technique, and special effects. Subject matter for the class includes portraits, landscapes, cityscapes, still life, and photo stories. Numerous artistically creative approaches to photography through additional media will also be included in the class. The class emphasizes a global approach to historic camera development and photographic artists.

Piano

Students will have an introduction to musical literacy through the medium of piano. Students will learn how to read musical notation in both treble and bass clef, proper keying techniques, elements of music, chord progression, and much more

Spanish Flex-Language Exploratory

This course is designed to explore German, French, or Spanish culture and learn beginning language skills.

Technology Project

In this class, students continue their study of digital media and other topics including audio, video, graphics, text, and animation tools. Concepts such as storyboards, scripts, media, color, and presentation will be learned.

Specialty Classes (Entrance based on district requirements and teacher recommendation.)

***Class meets yearlong in place of exploratory classes.**

Academic Pentathlon

This course offers a wide variety of experiences that align with gifted and talented programming standards. Learning opportunities meet grade level objectives in problem-solving, critical thinking, creative thinking, inquiry, cultural proficiency, metacognition and affective skills.

Jazz Band

Jazz Band is offered to students selected by audition and/or permission of the instructors. It is a year-long course and limited to the following instrumentation: flute, saxophone, trumpet, trombone, baritone horn, French horn, electric guitar, piano, electric or string bass, and drum set. Students are generally at an advanced level on their instruments, must be able to read music, and commit to participating in a variety of performances throughout the year. Students must also attend the Beveridge Summer Music Program jazz band classes, unless they have been excused by the instructors. The class includes listening to and playing a variety of styles of jazz band literature from around the world and the development of jazz improvisation skills. The Jazz Bands perform for school concerts, jazz festivals, and various school and community events. Optional out-of-town trips may be scheduled, dependent upon group's musical progress.

DUAL LANGUAGE

The Dual Language Program at Beveridge Magnet provides students with the opportunity to develop academic skills in both English and Spanish. Students in this program improve their literacy skills in both languages through content courses. In 6th grade, students have Language Arts, Math, and Social Studies, in Spanish. In 7th & 8th grade, students have Language Arts, Math, and Science in Spanish. Beveridge Dual Language students can also participate in bilingual elective courses such as the Dual Language Showcase and Dual Language Art. The goals of the Dual Language Program are high academic achievement, bilingualism, biliteracy, and cross-cultural competency.

ENGLISH as a SECOND LANGUAGE (ESL)

English as a Second Language (ESL)

The English as a Second Language program at Beveridge Magnet Middle School responds to the needs of the English Language Learners. The program includes language assessment and placement, develops the students' abilities to read, write, speak, and understand English, and is designed to prepare students for full participation in the curriculum of the school.

SPECIAL EDUCATION

Resource

The Resource program is designed to assist and remediate students with learning disabilities or behavior impairments. Social skills, learning strategies, tutoring, and remediation of academic deficits are emphasized. Placement in Resource is determined based on IEP minutes and goals. Test results serve as the basis for planning individualized remedial activities. A psychological verification of need and a multidisciplinary team recommendation is required.

Behavior Skills Program (BSP)

BSP serves student who exhibit behavior which adversely affects educational performance over an extended period of time and to a marked degree. Courses offered are based on individual student need and ability. Entry into BSP is based upon referral of a student by a teacher, counselor, administrator, or parent. A psychological verification of need and multidisciplinary team recommendation is required.

Alternate Curriculum Program (ACP)

ACP serves students with multiple disabilities in an environment that supports students' medical and sensory needs. The instructional program addresses the cognitive communication, community, motor, self-help, social skills, and prevocational domains. Opportunities are provided to participate in activities with non-disabled peers.

Hearing Impaired (HI)

The HI program serves students who have a hearing loss that impacts their ability to access and make progress in the general educational curriculum. Educational support is provided through consultation with classroom teachers, co-taught classes, self-contained classes, and Resource. Sign language interpreters and assistive technology are available.

The mission of Beveridge Magnet Middle School of Arts and Global Studies is to provide a safe and orderly educational environment that fosters student achievement in academic skills and growth in social and emotional maturity. Staff, students, and parents are committed to enhancing each student's talents, so they can successfully navigate an ever-changing world.

The vision of Beveridge Magnet Middle School is to be a student-centered learning community where staff members work cooperatively to assure the success of every student. Students have the opportunity to explore and expand their interests in the visual and performing arts and to increase their awareness of the world around them. The strong tradition of high expectations for all students is strengthened at Beveridge Magnet Middle School by ensuring students' achievement of both district content standards and of extra value standards unique to the theme areas of our magnet school.

School Hours

Beveridge Magnet Middle School will follow the Omaha Public Schools middle school time schedule. All students, grades six through eight, will start at 7:40 am and end at 3:05 pm. Before school, all students are invited eat a free breakfast served from 7:05 - 7:30 am in the cafeteria. After breakfast or for students not eating breakfast, students will wait on the patio in their grade level location or go to Walk Club in the gym. Students may also obtain a weekly library pass to go to the library to read or do "maker spaces". After school clubs, intramurals, and activities will run from 3:15 pm to 5:00 pm. For seventh and eighth graders, afterschool athletic practices will end at 5:00 pm. All late busses will depart at 5:15 pm. Any eligible transportation students may sign up for the late bus at lunch.

Beveridge Class Schedule

On Monday, Tuesday, and Friday, Beveridge students will follow an eight-period class schedule with Team Time at the beginning and end of the day. On Wednesday and Thursday, Beveridge students follow a block schedule with class periods 1, 3, 5, 7, and Team Time on Wednesday and 2, 4, 6, 8, and Team Time on Thursday. Block scheduling provides time for students to apply knowledge through hands on activities, group discussions, projects, and performance assessments.

Team Concept

Each sixth, seventh, and eighth grade student is assigned to an academic team. Teams provide a smaller community of students within the school to allow for more personalized instruction and interaction between teachers and students as well as classmates.

Content Standards

All courses are based on content standards that align with both the state of Nebraska academic content standards and the content standards of the Omaha Public Schools. Content standards are defined as "what a student should know and understand after content is taught". Student mastery of the content standards are measured through performance and project-based classroom assessments. In addition, the Nebraska State Accountability tests measure reading, math, and science.

Advisory

Advisory focuses on building relationships between staff and students. The curriculum encompasses study skills, content review, careers, school behavior expectations, counseling material, and other topics essential to becoming a productive middle school student.

MTSS-B

MTSS-B is framework for creating safer and more effective schools by structuring the learning environment to support the academic and social success of all students. The process supports the adoption and long-term implementation of efficient discipline throughout the school environment. MTSS-B methods are researched -based, proven to significantly reduce the occurrence of problem behaviors in schools and supported by a three-tiered model.

Library

The Beveridge Library serves students by offering a wide selection of fiction & nonfiction books, e-books, audiobooks & e-audiobooks, a Makerspace, and additional technology. We have space for students to come in with full classes, small groups, and individually and have a comfortable and safe place to work. The library operates on an open schedule, which means students do not have a set time each week as in elementary. Teachers sign up to bring in classes for help on assignments, use of databases, research, citations, and more. Students come in monthly for checkouts with a class and can check out multiple items at a time. Students may also access the library before school starting at 7:05 or at their lunch time after they eat with a pass. The library remains open until 3:30. Students may also get a pass to come in during class for checkouts or to work if the teacher allows.

School Counseling

The school counselor vision is Every Student. Every Day. Prepared for Success. Our mission is to prepare students to excel in college, career and life by instilling hope, increasing school connectedness and empowering student to achieve academic success. Every student will be provided a school counselor who will provide the personal support needed to set goals to achieve social competence and academic success. Every student will be empowered to gain the attitude, knowledge and skills necessary for lifelong academic, career and personal success. Every student will be provided a system of support to address immediate needs and concerns impacting school success.

Gifted and Talented Education

The goal of the Gifted and Talented Education (GATE) program is to identify gifted and exceptionally talented students within the Omaha Public Schools, nurture their social/emotional development and enhance their curriculum experience so these unique individuals may reach their fullest potential. At Beveridge Magnet the program is designed to address student needs through a combination of the following methods: Classroom Differentiation, Honors and Advanced Classes, Contest/Competition, and Enrichment Activities and Clubs.

Our Gifted and Talented Education (GATE) Program at Beveridge is based on the Omaha Public Schools "Best Practices". We will support your high ability learner. We will also support staff through collaboration and professional development and by planning and providing opportunities for your child.



LANGUAGE ARTS

7th Grade Language Arts Placement Guidelines	
Use Previous Years' Data The guideline for course placement is that a student would meet 3 or more of the prerequisite criteria.	Honors Language Arts 7 010101, 010102 H DL English Lang Arts Grade 7 013371, 013372 IB Lang A Hon English 7 010141, 010142
6 th Grade Winter MAP Reading Percentile	≥ 84
6 th Grade Language Arts Report Card Grade	A
Elementary Reading AND Writing Report Card Grades	A
5 th Grade NSCAS ELA Achievement Level	CCR Benchmark
GATE Identified	Yes
Teacher Recommendation	Yes
8th Grade Language Arts Placement Guidelines	
Use Previous Years' Data The guideline for course placement is that a student would meet 3 or more of the prerequisite criteria.	Honors Language Arts 8 010041, 010042 H DL English Lang Arts Grade 8 013381, 013382 IB Lang A Hon English 8 010271, 010272
7 th Grade Winter MAP Reading Percentile	≥ 84
7 th Grade Language Arts Report Card Grade	A
6 th Grade NSCAS ELA Achievement Level	CCR Benchmark
GATE Identified	Yes
Teacher Recommendation	Yes

Note: Students develop cognitively, socially and emotionally along different time and interest continuums. For students who are willing and interested in advanced coursework, but do not meet the course prerequisites, an exception may be requested through a conversation involving building staff, parents/guardians, and the student.

**Omaha Public Schools
Curriculum Instruction and Assessment
Middle School Placement Guidelines
Updated: December 20, 2018**



READING

5th Grade Reading Placement Guidelines (STUDENTS SHOULD MEET AT LEAST THREE OF THE FOLLOWING CRITERIA.)		
	Reading Skills 5A (Tier 2) 011231, 011232	Reading Skills 5B (Tier 3) 011251, 011252
3 th Grade NSCASS ELA Achievement Level	Developing	Developing
4 th Grade NWEA MAP Reading Percentile (Fall)	16 th - 49 th	≤ 15 th
4 th Grade NWEA MAP Reading Percentile (Winter)	16 th - 49 th	≤ 15 th
4 th Grade Quarter 1 F&P Benchmark Level	M - O	A - L
Teacher Recommendation	Yes	Yes

6th Grade Reading Placement Guidelines (STUDENTS SHOULD MEET AT LEAST THREE OF THE FOLLOWING CRITERIA.)		
	Reading Skills 6A (Tier 2) 011241, 011242	Reading Skills 6B (Tier 3) 011271, 011272
4 th Grade NSCASS ELA Achievement Level	Developing	Developing
5 th Grade NWEA MAP Reading Percentile (Fall)	16 th - 49 th	≤ 15 th
5 th Grade NWEA MAP Reading Percentile (Winter)	16 th - 49 th	≤ 15 th
5 th Grade Quarter 1 F&P Benchmark Level	P - R	A - O
Teacher Recommendation	Yes	Yes

Note: Students develop cognitively, socially and emotionally along different time and interest continuums. For students who are willing and interested in advanced coursework, but do not meet the course prerequisites, an exception may be requested through a conversation involving building staff, parents/guardians, and the student.



**Omaha Public Schools
Curriculum Instruction and Assessment
Middle School Placement Guidelines
Updated: December 20, 2018**



READING

7th Grade Reading Placement Guidelines (STUDENTS SHOULD MEET AT LEAST THREE OF THE FOLLOWING CRITERIA.)		
	Reading Skills 7A (Tier 2) 011111, 011112	Reading Skills 7B (Tier 3) 011201, 011202
5 th Grade NSCAS ELA Achievement Level	Developing	Developing
6 th Grade NWEA MAP Reading Percentile (Fall)	16 th - 49 th	≤ 15 th
6 th Grade NWEA MAP Reading Percentile (Winter)	16 th - 49 th	≤ 15 th
6 th Grade Quarter 1 F&P Benchmark Level (if available)	S - U	A - R
6 th Grade HMH Reading Inventory Lexile	605L-920L	≤ 605L
Teacher Recommendation	Yes	Yes

8th Grade Reading Placement Guidelines (STUDENTS SHOULD MEET AT LEAST THREE OF THE FOLLOWING CRITERIA.)		
	Reading Skills 8A (Tier 2) 011131, 011132	Reading Skills 8B (Tier 3) 011221, 011222
6 th Grade NSCAS ELA Achievement Level	Developing	Developing
7 th Grade NWEA MAP Reading Percentile (Fall)	16 th - 49 th	≤ 15 th
7 th Grade NWEA MAP Reading Percentile (Winter)	16 th - 49 th	≤ 15 th
7 th Grade HMH Reading Inventory Lexile	605L-965L	≤ 605L
Teacher Recommendation	Yes	Yes

Note: Students develop cognitively, socially and emotionally along different time and interest continuums. For students who are willing and interested in advanced coursework, but do not meet the course prerequisites, an exception may be requested through a conversation involving building staff, parents/guardians, and the student.



MATHEMATICS COURSE SEQUENCE

High school graduation requires 3 years of math and several universities require 4 years of math.

Possible Course Paths for Above Grade Level Mathematics							
5 th Grade	6 th Grade	7 th Grade	8 th Grade	9 th Grade	10 th Grade	11 th Grade	12 th Grade
Math 5 One-block 040031, 040032 Double-block 041601, 041602 Dual Language 041681,041682	Math 6 One-block 040041, 040042 Double-block 041611, 041612 Dual Language 041691,041692	Math 6 students and 6 th graders from K-6 Elementary Schools will follow the 7 th grade placement guidelines and may meet criteria for Math 7, H Pre-Algebra 1-2, or H Algebra 1-2					
	Advanced Math 6	H Pre-Algebra 1-2	H Algebra 1-2	H Geometry	H Algebra 3-4	H PreCalc/Trig	AP Calculus and/or AP Statistics
	Advanced Math 6	H Algebra 1-2	H Geometry 1-2	H Algebra 3-4	H PreCalc/Trig	AP Calculus	Calc3/Differential Equations and/or AP Statistics

Note: Students develop cognitively, socially and emotionally along different time and interest continuums. For students who are willing and interested in advanced coursework, but do not meet the course prerequisites, an exception may be requested through a conversation involving building staff, parents/guardians, and the student.

**Omaha Public Schools
Curriculum Instruction and Assessment
Middle School Placement Guidelines
Updated: December 20, 2018**



MATHEMATICS

- Advanced Math 6 is an above grade level course that compacts the 6th and 7th grade curriculum.
- Honors Pre-Algebra 1-2 or Honors Algebra 1-2 for 6th graders may occur as part of an Acceleration Agreement through the office of Gifted and Talented Education.

6th Grade Math Placement Guidelines	
The on grade level placement for 6 th grade students is Mathematics 6	
The guideline for course placement is that a student would meet the MAP Math Percentile guideline of 84 or greater OR if the MAP score is between 84 and 69, the student must meet one additional criterion*	Advanced Math 6 One-Block 045041,045042 Double-block 041621,041622
5 th Grade Winter MAP Math Percentile	≥ 84 ≥ 69 AND < 84*
5 th Grade Math Report Card Grades	A
GATE Identification	Yes
Teacher Recommendation	Yes

Note: Students develop cognitively, socially and emotionally along different time and interest continuums. For students who are willing and interested in advanced coursework, but do not meet the course prerequisites, an exception may be requested through a conversation involving building staff, parents/guardians, and the student.



**Omaha Public Schools
Curriculum Instruction and Assessment
Middle School Placement Guidelines
Updated: December 20, 2018**



MATHEMATICS

7th Grade Math Placement Guidelines The on grade level placement for 7 th grade students is Mathematics 7 One-Block 040081, 040082 Double-block 041631,041632 Dual Language (Double Block) 041701,041702 DL Math 7 (Single Block) 045091, 045092		
	Honors Pre-Algebra One-block 040371, 040372 Double-block 041651,041652 Dual Language (Single Block) 040871, 040872	Honors Algebra 1-2 One-block 040281, 040282 Double-block 041661, 041662 Dual Language (Single Block) 040911, 040912
The guideline for course placement is that a student would meet the Orleans-Hanna score or the MAP Math Percentile guideline AND one additional criterion.		
Orleans-Hanna Algebra Prognosis Test	≥ 65	≥ 85
6 th Grade Winter MAP Math Percentile	≥ 69	≥ 84
6 th Grade Math Report Card Grade	A or B	A
GATE Identified	Yes	Yes
Teacher Recommendation	Yes	Yes

Note: Students develop cognitively, socially and emotionally along different time and interest continuums. For students who are willing and interested in advanced coursework, but do not meet the course prerequisites, an exception may be requested through a conversation involving building staff, parents/guardians, and the student.

**Omaha Public Schools
Curriculum Instruction and Assessment
Middle School Placement Guidelines
Updated: December 20, 2018**



8th Grade Math Placement Guidelines		
<p>The on grade level placement for 8th grade students is Pre-Algebra 1-2 Students who earn a D or an F in an above grade level course should be placed in the on grade level course to ensure future success.</p> <p align="center">One-Block 040161, 040162 Double-block 041641, 041642 Dual Language (Double Block) 041711, 041712</p>		
<p>The guideline for course placement is that a student would meet the Orleans-Hanna score or the MAP Math Percentile guideline and one additional criterion.</p>	<p>Honors Algebra 1-2 One-block 040281, 040282 Double-block 041661, 041662 Dual Language (Single Block) 040911, 040912</p>	<p>Honors Geometry 1-2 One-block 040361, 040362 Double-block 041671, 041672</p>
	<p>7th Grade Winter MAP Math Percentile</p>	<p>≥ 69</p>
<p>7th Grade Math Report Card Grade</p>	<p>A</p>	<p>A</p>
<p>GATE Identified</p>	<p>Yes</p>	<p>Yes</p>
<p>Teacher Recommendation</p>	<p>Yes</p>	<p>Yes</p>

*Orleans-Hanna results will be made available to DPs and School Counseling leads by the end of February

Note: Students develop cognitively, socially and emotionally along different time and interest continuums. For students who are willing and interested in advanced coursework, but do not meet the course prerequisites, an exception may be requested through a conversation involving building staff, parents/guardians, and the student.

**Omaha Public Schools
Curriculum Instruction and Assessment
Middle School Placement Guidelines
Updated: December 20, 2018**



SCIENCE

8th Grade Physical Science Placement Guidelines	
Use Previous Years' Data (The guideline for course placement is that a student would meet 3 or more of the prerequisite criteria)	H Physical Science Gr 8 (Early entry to the high school sequence) 060291, 060292
7 th Grade Winter Science MAP Percentile	≥84
7 th Grade Winter MAP Math AND Reading Percentile	≥50
Science 7 Report Card Grade (060161, 060162) DL Science 7 (060051, 060052)	A
Pre-Algebra Semester Report Card Grade	A
H Science 7 Report Card Grade (062171,062171) H DL Science 7 (062181, 062182)	A or B
Algebra Semester Report Card Grade	A or B
GATE Identified	Yes
Teacher Recommendation	Yes

Honors Science Grade 7 Placement Guidelines	
Use Previous Years' Data (The guideline for course placement is that a student would meet 3 or more of the prerequisite criteria)	H Science Gr 7 062171, 062172
6 th Grade Winter Science MAP Percentile	≥84
6 th Grade Winter MAP Math AND Reading Percentile	≥50
Science 6 Semester Report Card Grade	A
Math 6 Semester Report Card Grade	A or B
GATE Identified	Yes
Teacher Recommendation	Yes

Note: Students develop cognitively, socially and emotionally along different time and interest continuums. For students who are willing and interested in advanced coursework, but do not meet the course prerequisites, an exception may be requested through a conversation involving building staff, parents/guardians, and the student.

Omaha Public Schools Graduation & College Entrance Requirements

	OPS GRADUATION REQUIREMENTS	COLLEGE ENTRANCE REQUIREMENTS*
SUBJECT	CREDITS	YEARS
English	8 CREDITS Grade 9 – English 1 & 2 Grade 10 – English 3 & 4 Grade 11 – English 5 & 6 Grade 12 – English 7 & 8	4 years Fulfilled by OPS requirements
Social Studies	7 CREDITS Grade 9 – U.S. History 1 & 2 Grade 10 – Human Geography & Intro to Economics Grade 11 – World History 1 & 2 Grade 12 – American Government	3 years Fulfilled by OPS requirements
Mathematics	6 CREDITS Grade 9 – Math as Recommended Grade 10 – Math as Recommended Grade 11 – Math as Recommended	3 years Algebra 1-2, Geometry 1-2, Algebra 3-4, UNL – One additional year of math beyond Algebra 3-4
Science	** 6 CREDITS Grade 9 – Physical Science 1 & 2 Grade 10 – Biology 1 & 2 Grade 11 – Science Elective	3 years Fulfilled by OPS requirements UNL, UNO, UNK – 2 years must be selected from Biology, Chemistry, Physics, or Earth Science
Physical Education	4 CREDITS	
Human Growth & Development	1 CREDIT	N/A
Personal Finance	1 CREDIT Grade 12 – Personal Finance	
Electives	16 CREDITS <i>Consider education plans and interests</i>	
World Language	N/A	2 –3 years of the same language
TOTAL	49 CREDITS REQUIRED <i>For all OPS High Schools</i>	

RECOMMENDED ON TRACK INDICATORS

Grade Level	9 - Freshman	10 - Sophomore	11 - Junior	12 - Senior
Credits Earned	13 credits	25 total credits	37 total credits	49 total credits <small>In Required subjects</small>

Note: 49 Credits are required to graduate.

*NEBRASKA COLLEGE ENTRANCE REQUIREMENTS:

Metro Community College and other Nebraska Community Colleges – Proof of graduation from an accredited high school.
Nebraska State College System – Chadron, Peru, Wayne – Proof of graduation from an accredited high school.
University of Nebraska System – UNO, UNL, UNK (in line with NCAA requirements) – See your OPS District Student Handbook

Students and parents/guardians should research the requirements of each institution to ensure that students have selected appropriate courses.

For students attending King Science Technology Magnet who take Biology and Physical Science their sequence could look different at their respective high schools.

*** For students who have successfully completed Physical Science in 8th grade, their sequence will begin with Biology.*

Omaha Public Schools does not discriminate on the basis of race, color, national origin, religion, sex (including pregnancy), marital status, sexual orientation, disability, age, genetic information, gender identity, gender expression, citizenship status, veteran status, political affiliation or economic status in its programs, activities and employment and provides equal access to the Boy Scouts and other designated youth groups. The following individual has been designated to accept allegations regarding non-discrimination policies: Superintendent of Schools, 3215 Cumming Street, Omaha, NE 68131 (531-293-9822). The following persons have been designated to handle inquiries regarding the non-discrimination policies: Director for the Office of Equity and Diversity, 3215 Cumming Street, Omaha, NE 68131 (531-293-0307).



16834

7th/8th grade Sports

August, September, October (1st Quarter)

Cross Country

Football

Volleyball

October, November, December (2nd Quarter)

Boys Basketball

Girls Swimming

January, February, March (3rd Quarter)

Girls Basketball

Boys Swimming

Wrestling

April, May (4th Quarter)

Track and Field

Boys Soccer

Girls Soccer

6th grade Intramural Sports

**Open to boys and girls*

**Exact dates will be determined at the beginning of the school year*

Basketball

Flag Football

Soccer

Volleyball



"Home of the Beveridge Bulldogs"